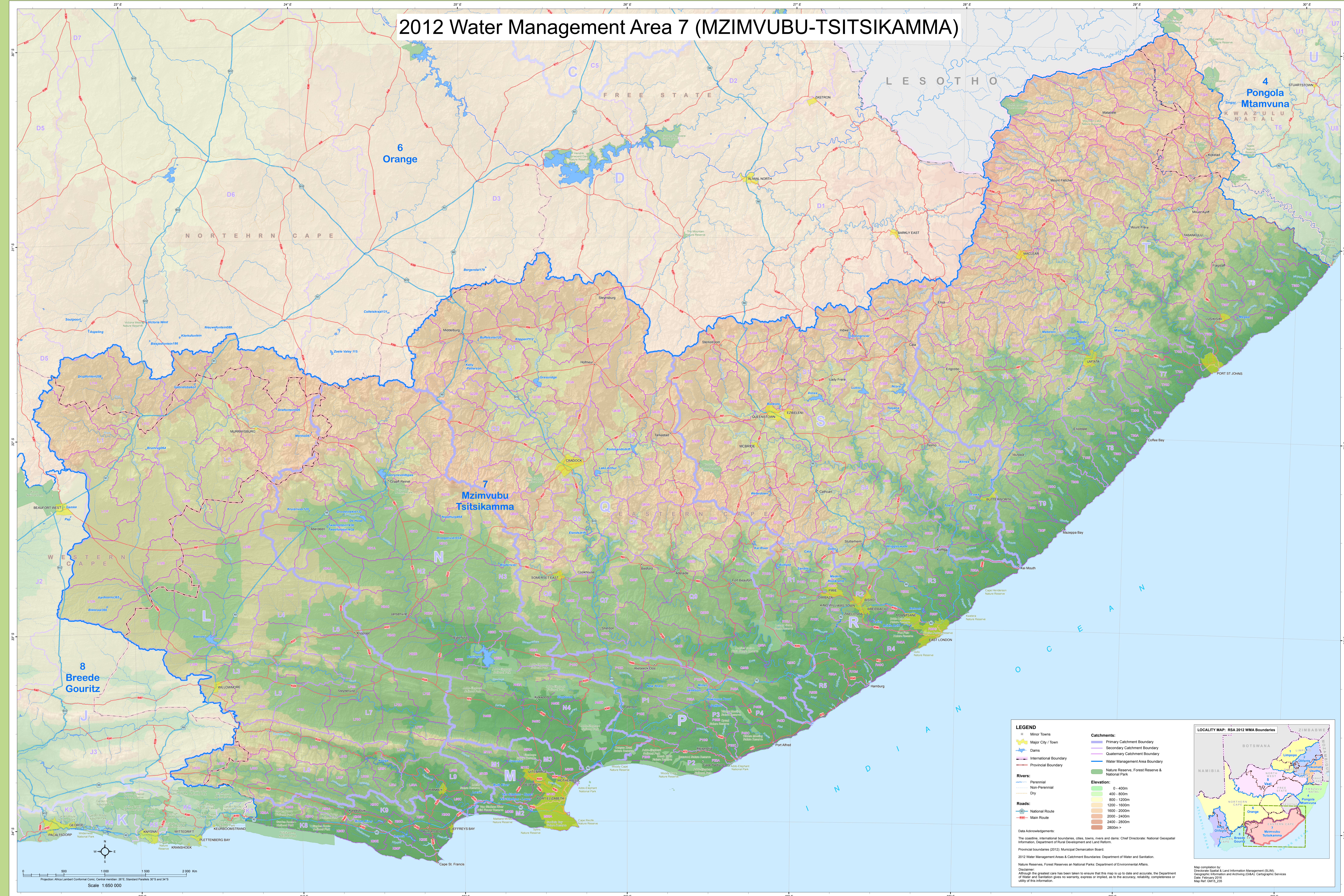


2012 Water Management Area 7 (MZIMVUBU-TSITSIKAMMA)



LEGEND

- Minor Towns
- Major City / Town
- Dams
- International Boundary
- Provincial Boundary
- Perennial Rivers
- Non-Perennial Rivers
- Dry Rivers
- National Route
- Main Route

Catchments:

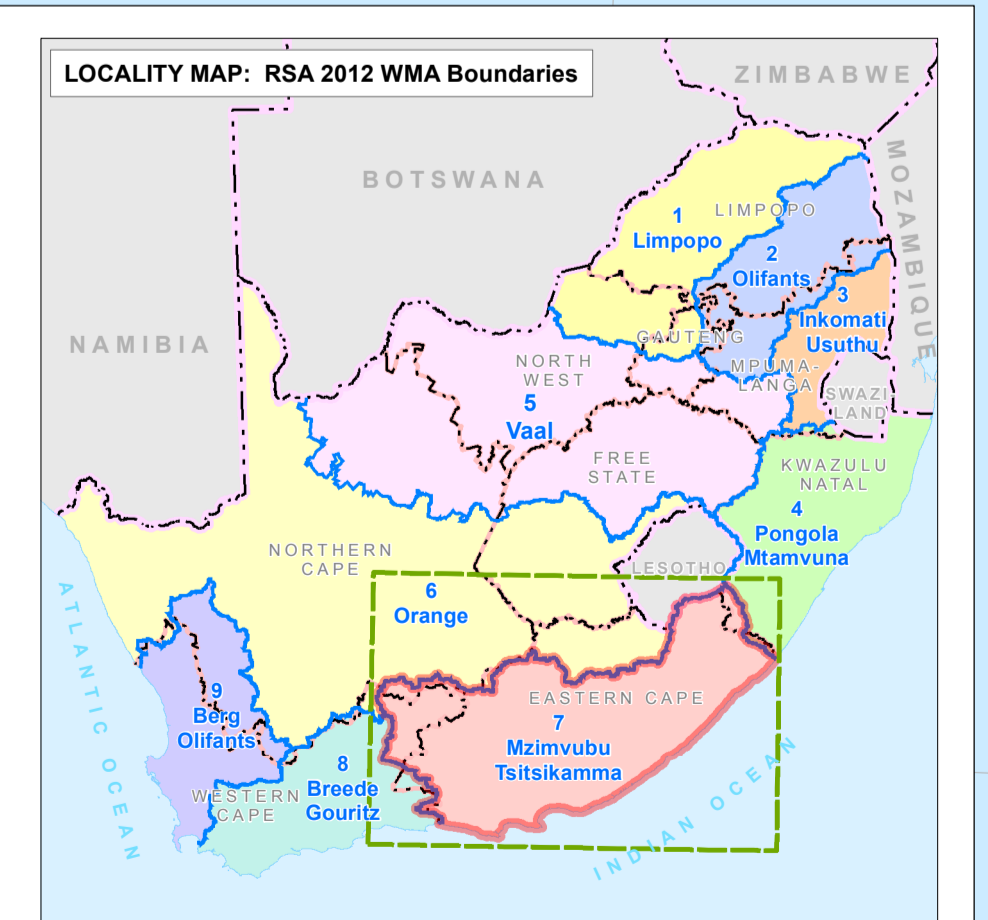
- Primary Catchment Boundary
- Secondary Catchment Boundary
- Quaternary Catchment Boundary
- Water Management Area Boundary
- Nature Reserve, Forest Reserve & National Park

Elevation:

- 0 - 400m
- 400 - 800m
- 800 - 1200m
- 1200 - 1600m
- 1600 - 2000m
- 2000 - 2400m
- 2400 - 2800m
- 2800m >

Data Acknowledgements:
 The coastline, international boundaries, cities, towns, rivers and dams: Chief Directorate: National Geospatial Information, Department of Rural Development and Land Reform.
 Provincial boundaries (2012): Municipal Demarcation Board.
 2012 Water Management Areas & Catchment Boundaries: Department of Water and Sanitation.
 Nature Reserves, Forest Reserves on National Parks: Department of Environmental Affairs.

Disclaimer:
 Although the greatest care has been taken to ensure that this map is up to date and accurate, the Department of Water and Sanitation gives no warranty, express or implied, as to the accuracy, reliability, completeness or utility of this information.



Map compilation by:
 Directorate: Spatial & Land Information Management (SLIM),
 Geographic Information and Archiving (GISA), Cartographic Services
 Date: February 2015
 Map Ref: DM15_205